

Solnechny / Irkutsk, Russia

Late Soviet (Brezhnev) Microrayon

Area Size: 148 ha

Planned: 1969

Realized: 1972-1990

Design Institute “Irkutskgrazhdanproekt”

Architects: N. Bukh, K. Marchenki, V. Perfilev, V. Voronezhsky

Located in the city's southeast part, the residential microrayon consists of two sub-areas and has a peninsular location. Among the built microrayons of Irkutsk, Solnechny became one of the highest-density suburbs, where the ideas of the architecture of the late 1960s were implemented. The embodied microdistrict com-

bined the concept of creating a local residential and public zones. Today there is a significant transformation of the neighbourhood at the level of spatial and planning structure, with impact on changing the quality of the urban environment and the loss of morphological features of the original project.



View of the microrayon from the dam,
by E. Bruhonenko, 1979



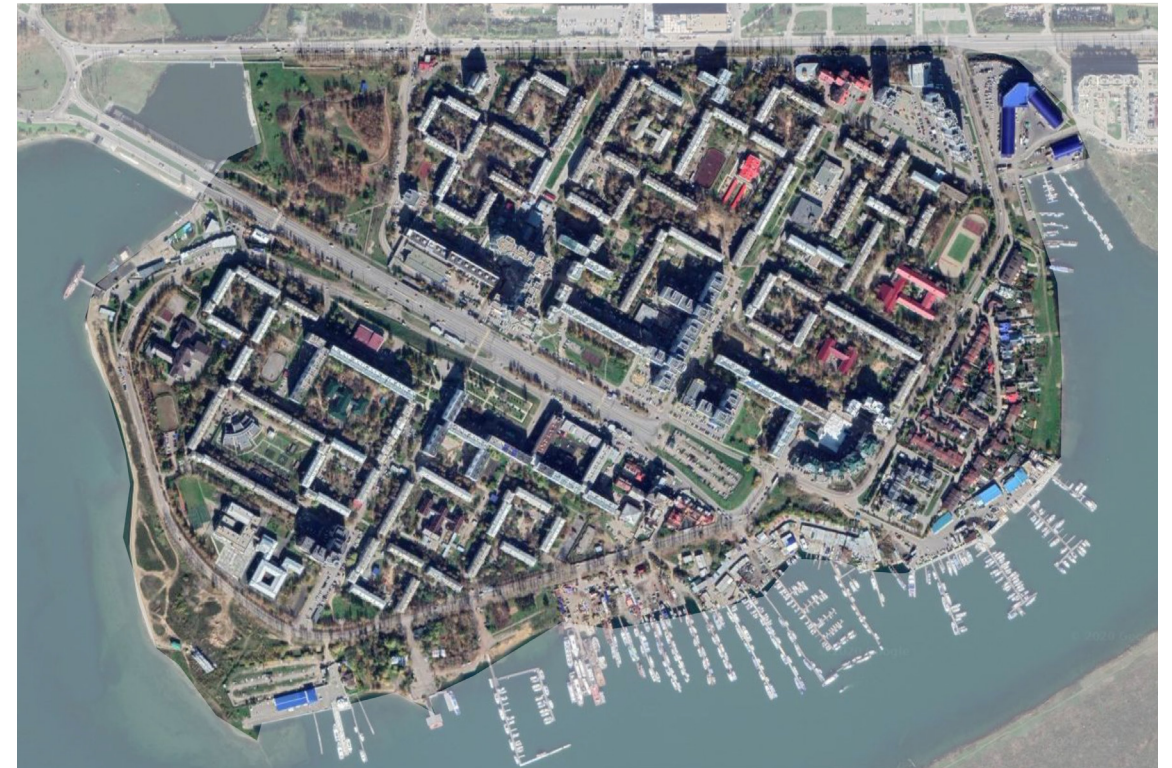
View of the microrayon from the dam,
by E. Gladkova, 2023



View of the microrayon from the South,
by E. Bruhonenko, 1987



View of the microrayon from the South,
by E. Gladkova, 2021



Solnechny microrayon aerial view, Google, 2020



Aerial view of the microrayon from the Southeast, by R. Maliovich, 2020